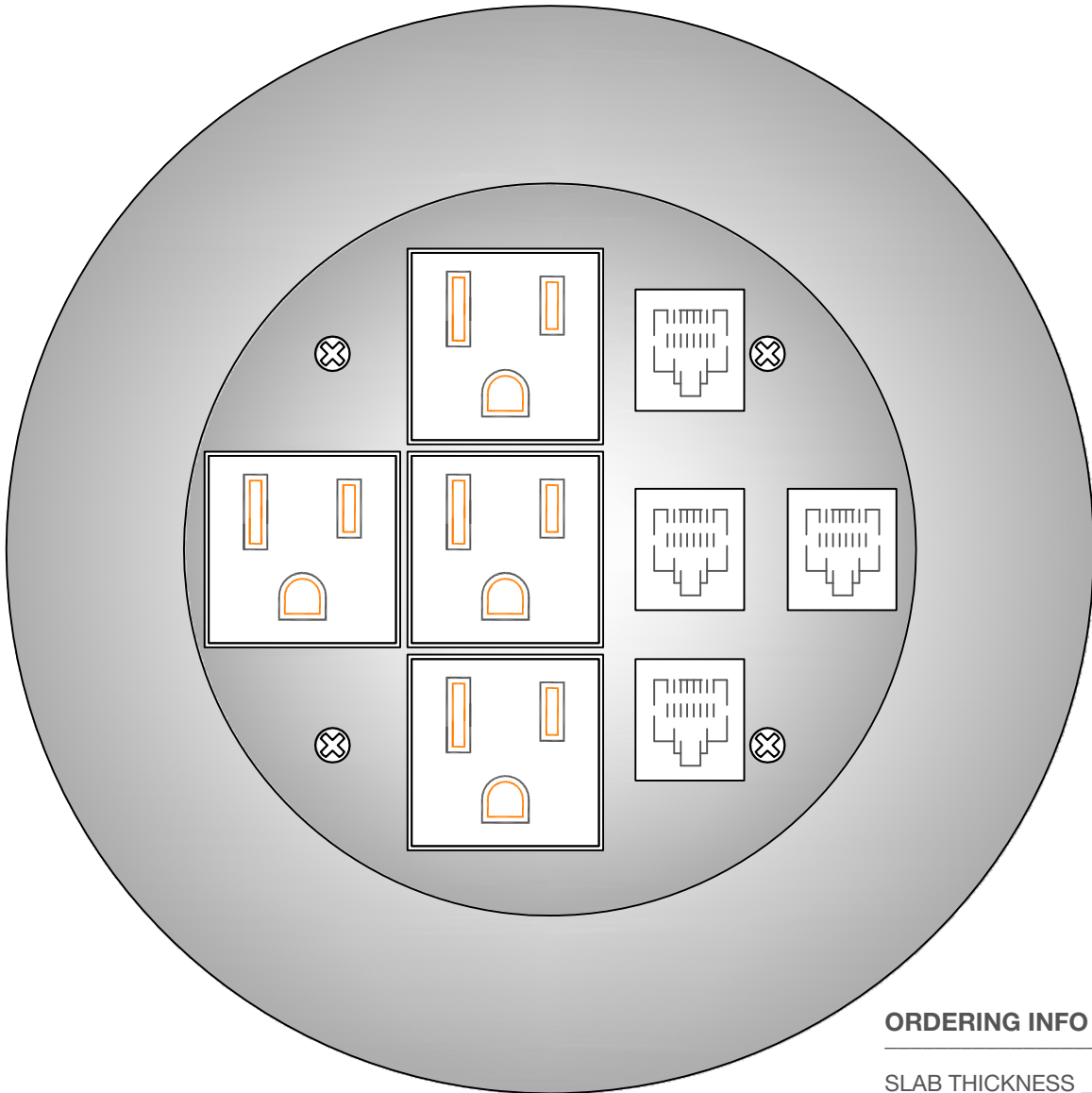


6" Dia.



MOI-PWR4-COMM4

4x15Amp single receptacles and 4 openings for COMM jacks
 (openings suitable for all manufacturers Keystone style jacks)
 COMM jacks not supplied or installed by Multiconnect.

NOTE:

Single receptacles shall be 5-15R, 5-20RA available
 Keystone style jacks shall be CSA / UL Recognized or Listed.

ORDERING INFO



SLAB THICKNESS _____ inches

RECEPT. type 20A


FINISH type
 brass
 stainless steel
 blk powder coat
 (drop cover only)

COVER type
 drop
 threaded coin
 threaded security
 hinged

PROPRIETARY AND CONFIDENTIAL
 THE INFORMATION CONTAINED IN THIS DRAWING IS THE SOLE PROPERTY OF MULTICONNECT. ANY REPRODUCTION IN PART OR AS A WHOLE WITHOUT THE WRITTEN PERMISSION OF MULTICONNECT IS PROHIBITED.

		DIMENSIONS ARE IN MM TOLERANCES: ANGLES: ± 1 DEGREE LINEAR: ± 0.1 MM (UNLESS SPECIFIED)		NAME	DATE (yy-mm-dd)
		MATERIAL See Variant table		DRAWN	TJP
		FINISH		CHECKED	
NEXT ASST	USED ON			ENG. APPR.	
APPLICATION		DO NOT SCALE DRAWING		MFG APPR.	
				Q.A.	
				COMMENTS:	

JOB TITLE:

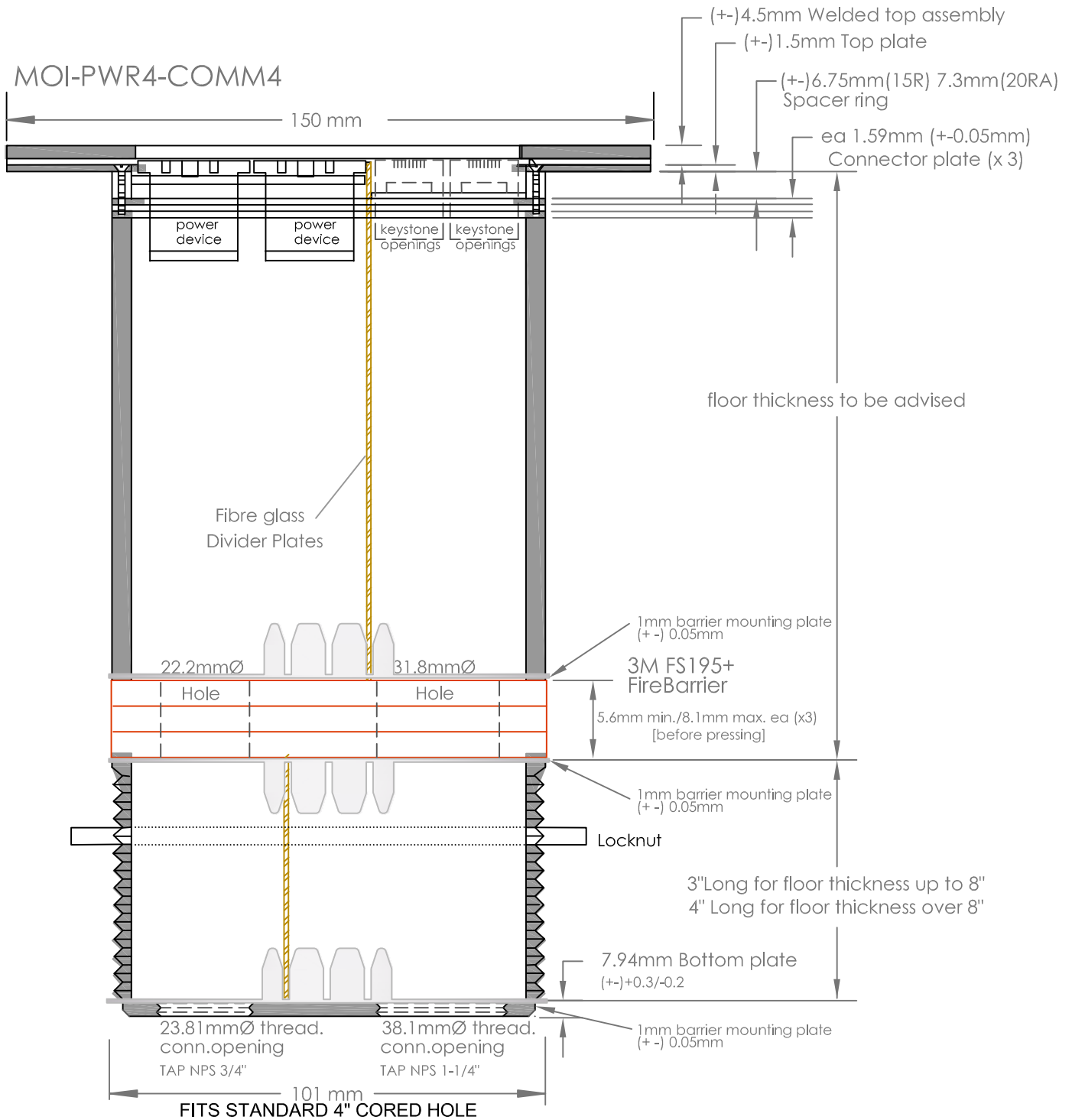


630-665-2075 www.lewelectric.com

SIZE	DWG. NO.	REV.
A	MOI-PWR4-COMM4	R7

SCALE=N.T.S. WEIGHT: SHEET 1 OF 3

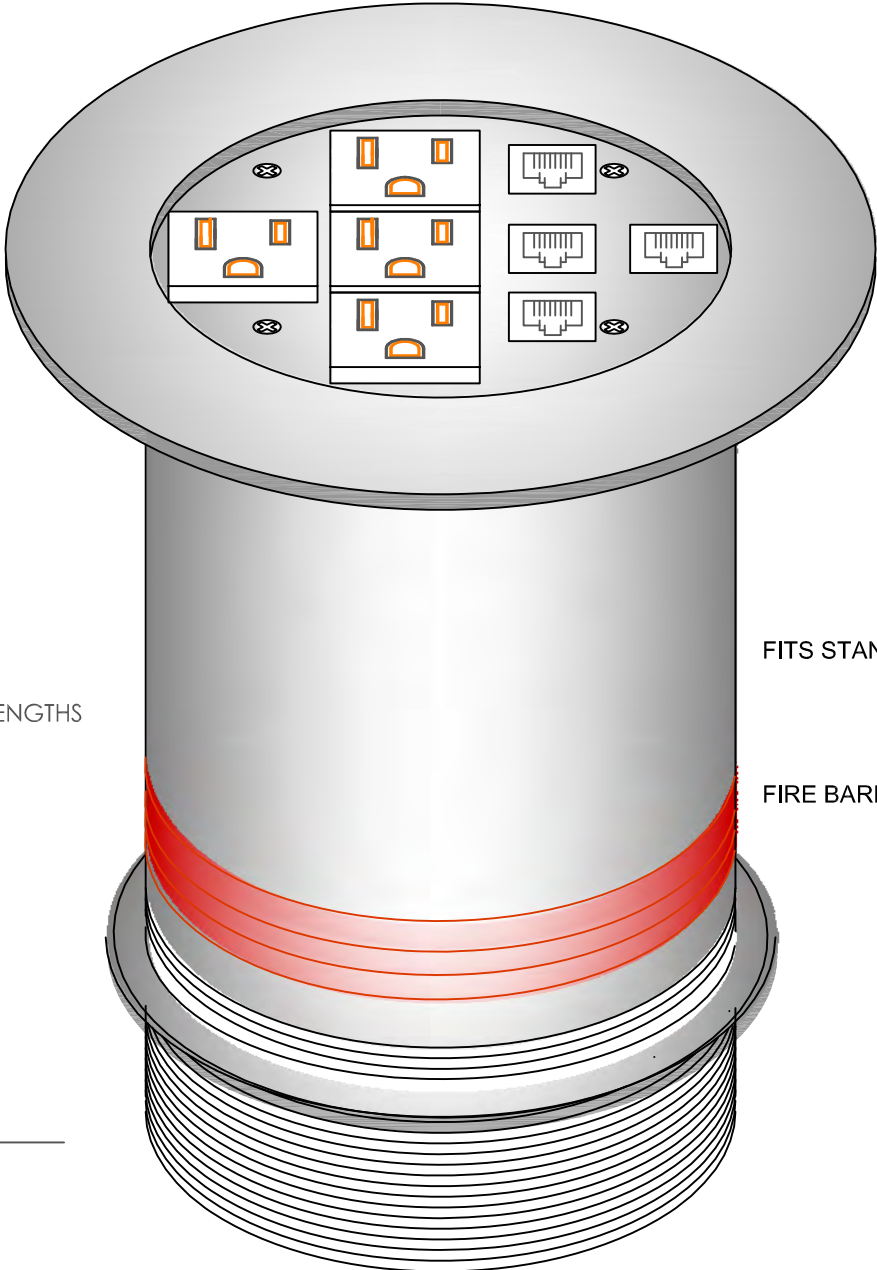
MOI-PWR4-COMM4



all tolerance (+ -) = 0.3mm

<p>PROPRIETARY AND CONFIDENTIAL</p> <p>THE INFORMATION CONTAINED IN THIS DRAWING IS THE SOLE PROPERTY OF MULTICONNECT. ANY REPRODUCTION IN PART OR AS A WHOLE WITHOUT THE WRITTEN PERMISSION OF MULTICONNECT IS PROHIBITED.</p>			<p>DIMENSIONS ARE IN MM TOLERANCES: ANGLES: ± 1 DEGREE LINEAR: ± 0.1 MM (UNLESS SPECIFIED)</p>	NAME	DATE	<p>JOB TITLE:</p> <p>MULTICONNECT™</p> <p>630-665-2075 www.lewelectric.com</p>	
				DRAWN	TJP		12-04-24
				CHECKED			
				ENG. APPR.			
				MFG APPR.			
		Q.A.			<p>COMMENTS:</p>		
NEXT ASST	USED ON	MATERIAL					
		See Variant table					
		FINISH					
APPLICATION		DO NOT SCALE DRAWING					
				SCALE=N.T.S.	WEIGHT:	SHEET 3 OF 3	

COVER PER SUBMITTAL



-COMM jacks shall be CSA / UL Recognized or Listed, Keystone style to mount in comm. openings.

FITS STANDARD 4" CORED HOLE

FIRE BARRIER-2 HOUR UL

STANDARD LENGTHS
8", 10" & 12"

PROPRIETARY AND CONFIDENTIAL
THE INFORMATION CONTAINED IN THIS DRAWING IS THE SOLE PROPERTY OF MULTICONNECT. ANY REPRODUCTION IN PART OR AS A WHOLE WITHOUT THE WRITTEN PERMISSION OF MULTICONNECT IS PROHIBITED.

		DIMENSIONS ARE IN MM TOLERANCES: ANGLES: ± 1 DEGREE LINEAR: ± 0.1 MM (UNLESS SPECIFIED)		NAME	DATE (yy-mm-dd)	JOB TITLE:
				DRAWN	TJP	12-04-24
				CHECKED		
				ENG. APPR.		
				MFG APPR.		
				Q.A.		
				COMMENTS:		
				630-665-2075 www.lewelectric.com		
NEXT ASST	USED ON	MATERIAL See Variant table		SIZE	DWG. NO.	REV.
		FINISH		A	MOI-PWR4-COMM4	R7
APPLICATION		DO NOT SCALE DRAWING		SCALE=N.T.S. WEIGHT:		SHEET 2 OF 3

