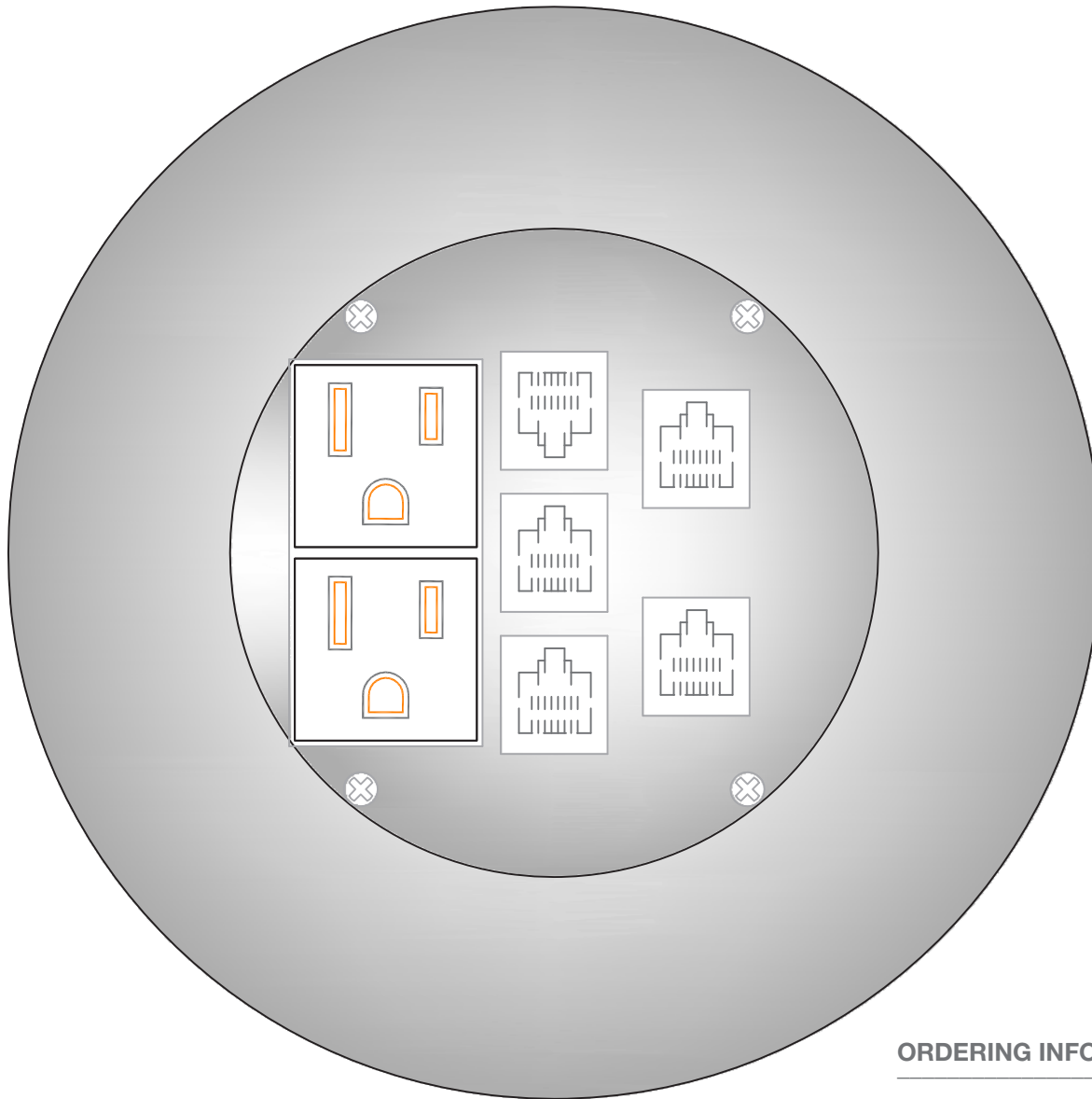


6"Dia



## MOI-PWR2-COMM5

2 single receptacle and 5 openings for COMM jacks  
 (openings suitable for all manufacturers Keystone style jacks)  
 COMM jacks not supplied or installed by Multiconnect.

### NOTE:

Single receptacles shall be 5-15R. 5-20RA available.  
 Keystone style jacks shall be CSA / UL Recognized or Listed

### ORDERING INFO

SLAB THICKNESS \_\_\_\_\_ inches

RECEPT. type 20A

FINISH type  
 brass   
 stainless steel   
 blk powder coat   
 (drop cover only)

COVER type  
 drop   
 threaded coin   
 threaded security   
 hinged

		DIMENSIONS ARE IN MM TOLERANCES: ANGLES: ± 1 DEGREE LINEAR: ± 0.1 MM (UNLESS SPECIFIED)	NAME	DATE (yy-mm-dd)
			DRAWN	TJP
			CHECKED	
			ENG. APPR.	
			MFG APPR.	
			Q.A.	
			COMMENTS:	
		MATERIAL		
		See Variant table		
		FINISH		
NEXT ASST	USED ON			
APPLICATION		DO NOT SCALE DRAWING		

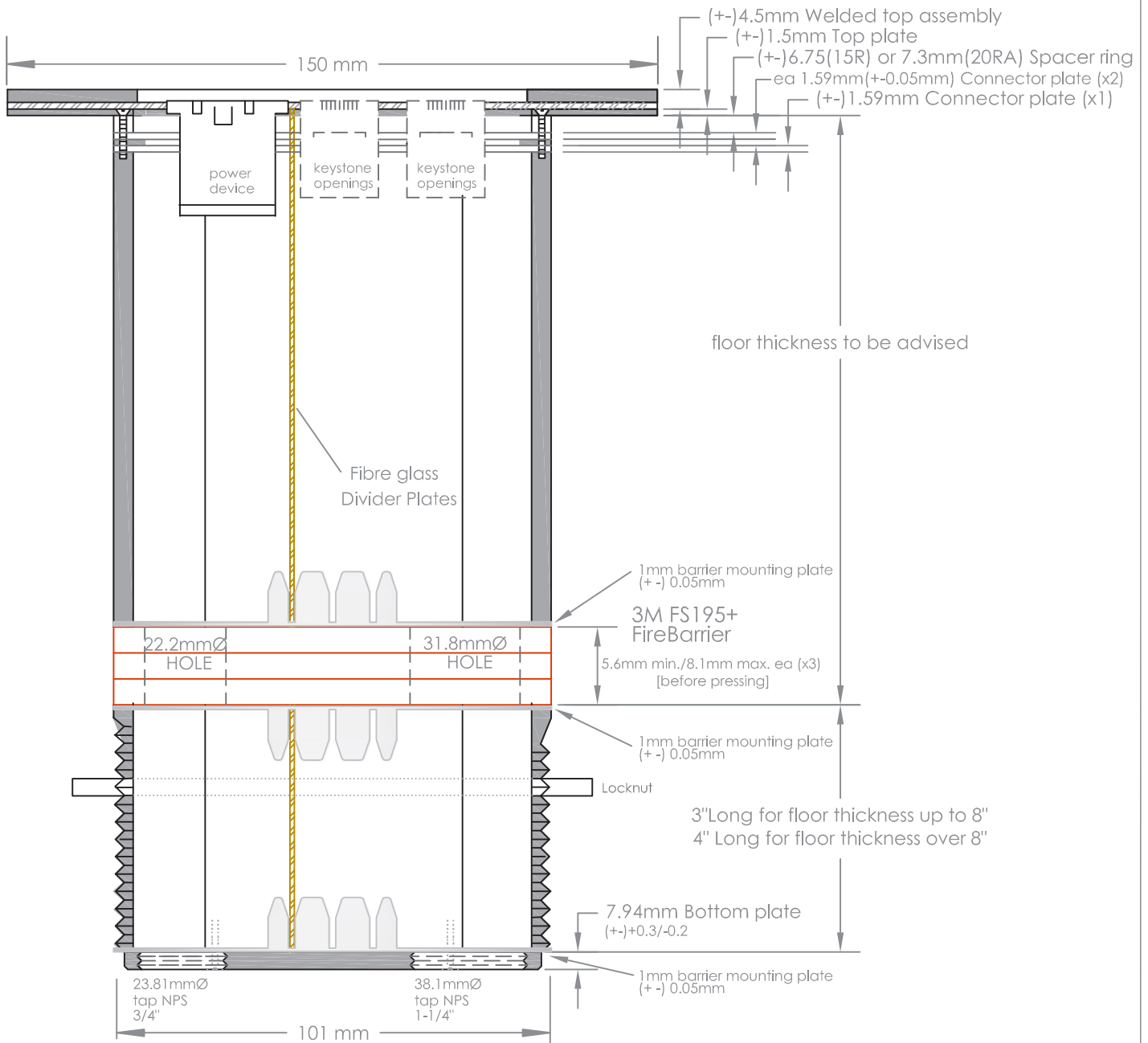
JOB TITLE:



877-537-2019 www.lewelectric.com

SIZE	DWG. NO.	REV.
A	MOI-PWR2-COMM5	
SCALE=1:1	WEIGHT:	SHEET 1 OF 3

**PROPRIETARY AND CONFIDENTIAL**  
 THE INFORMATION CONTAINED IN THIS DRAWING IS THE SOLE PROPERTY OF MULTICONNECT. ANY REPRODUCTION IN PART OR AS A WHOLE WITHOUT THE WRITTEN PERMISSION OF MULTICONNECT IS PROHIBITED.



all tolerance (+ -) = 0.3mm

**PROPRIETARY AND CONFIDENTIAL**  
 THE INFORMATION CONTAINED IN THIS DRAWING IS THE SOLE PROPERTY OF MULTICONNECT. ANY REPRODUCTION IN PART OR AS A WHOLE WITHOUT THE WRITTEN PERMISSION OF MULTICONNECT IS PROHIBITED.

		DIMENSIONS ARE IN MM TOLERANCES: ANGLES: ± 1 DEGREE LINEAR: ± 0.1 MM (UNLESS SPECIFIED)	
		MATERIAL See Variet table	
NEXT ASST	USED ON	FINISH	
APPLICATION		DO NOT SCALE DRAWING	

NAME	DATE
TJP	12-04-24
CHECKED	
ENG. APPR.	
MFG APPR.	
Q.A.	
COMMENTS:	

JOB TITLE:

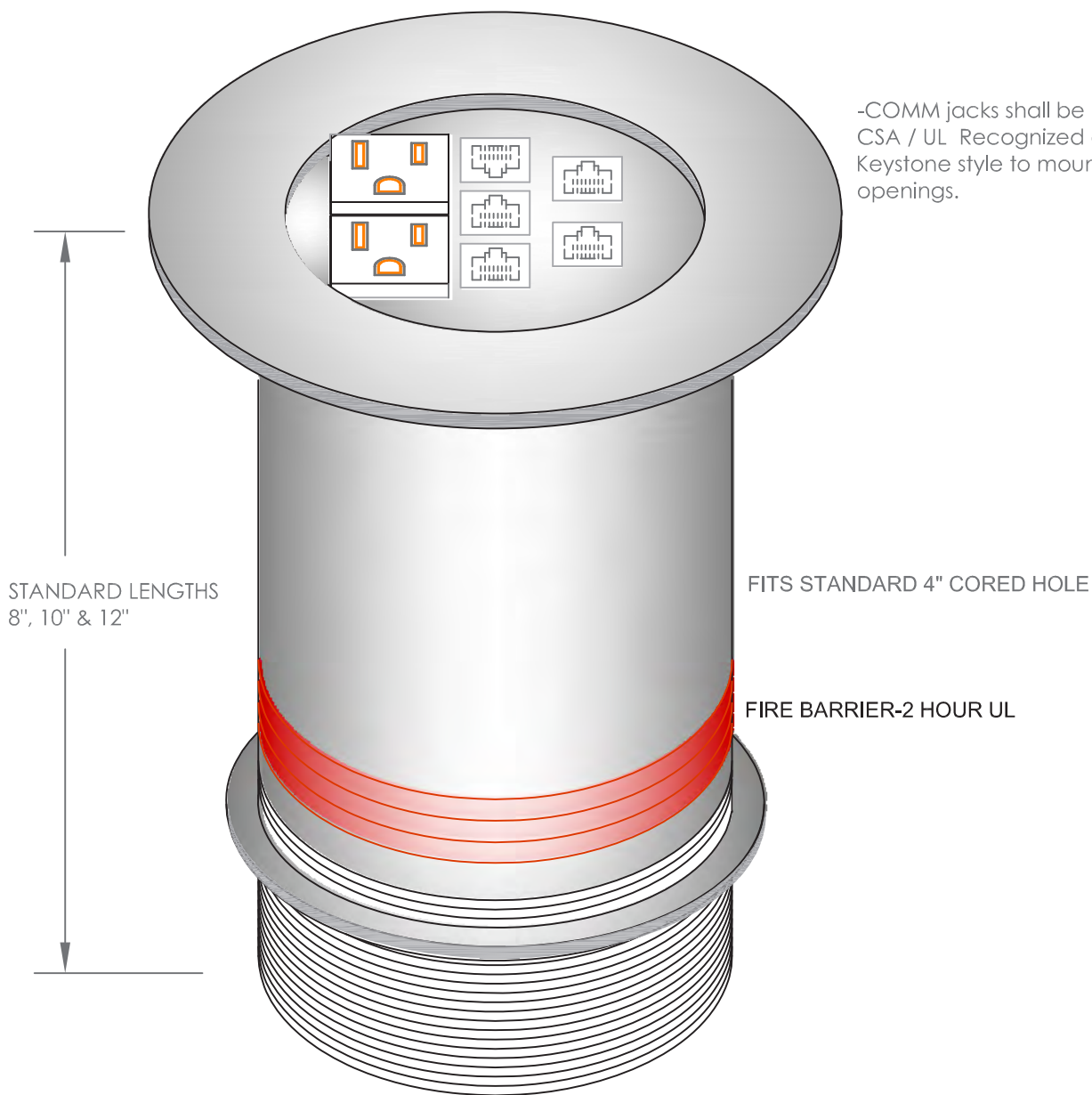
**LEW ELECTRIC FITTINGS COMPANY**

**877-537-2019 www.lewelectric.com**

SIZE: **A** DWG. NO.: **MOI-PWR2-COMM5** REV.:

SCALE: n.t.s. WEIGHT: SHEET 3 OF 3

COVER PER SUBMITTAL




-COMM jacks shall be CSA / UL Recognized or Listed, Keystone style to mount in comm. openings.

STANDARD LENGTHS  
8", 10" & 12"

FITS STANDARD 4" CORED HOLE

FIRE BARRIER-2 HOUR UL

**PROPRIETARY AND CONFIDENTIAL**  
THE INFORMATION CONTAINED IN THIS DRAWING IS THE SOLE PROPERTY OF MULTICONNECT. ANY REPRODUCTION IN PART OR AS A WHOLE WITHOUT THE WRITTEN PERMISSION OF MULTICONNECT IS PROHIBITED.

		DIMENSIONS ARE IN MM TOLERANCES: ANGLES: ± 1 DEGREE LINEAR: ± 0.1 MM (UNLESS SPECIFIED)		NAME	DATE (yy-mm-dd)	JOB TITLE:	
				DRAWN	TJP	12-04-24	
				CHECKED			
				ENG. APPR.			
				MFG APPR.			
				Q.A.			
				COMMENTS:			
NEXT ASST	USED ON	MATERIAL See Variant table					
		FINISH					
APPLICATION		DO NOT SCALE DRAWING					
				 <b>LEW ELECTRIC FITTINGS COMPANY</b>		<b>877-537-2019</b> <a href="http://www.lewelectric.com">www.lewelectric.com</a>	
SIZE	DWG. NO.			REV.			
A	MOI-PWR2-COMM5						
SCALE=1:1		WEIGHT:				SHEET 2 OF 3	