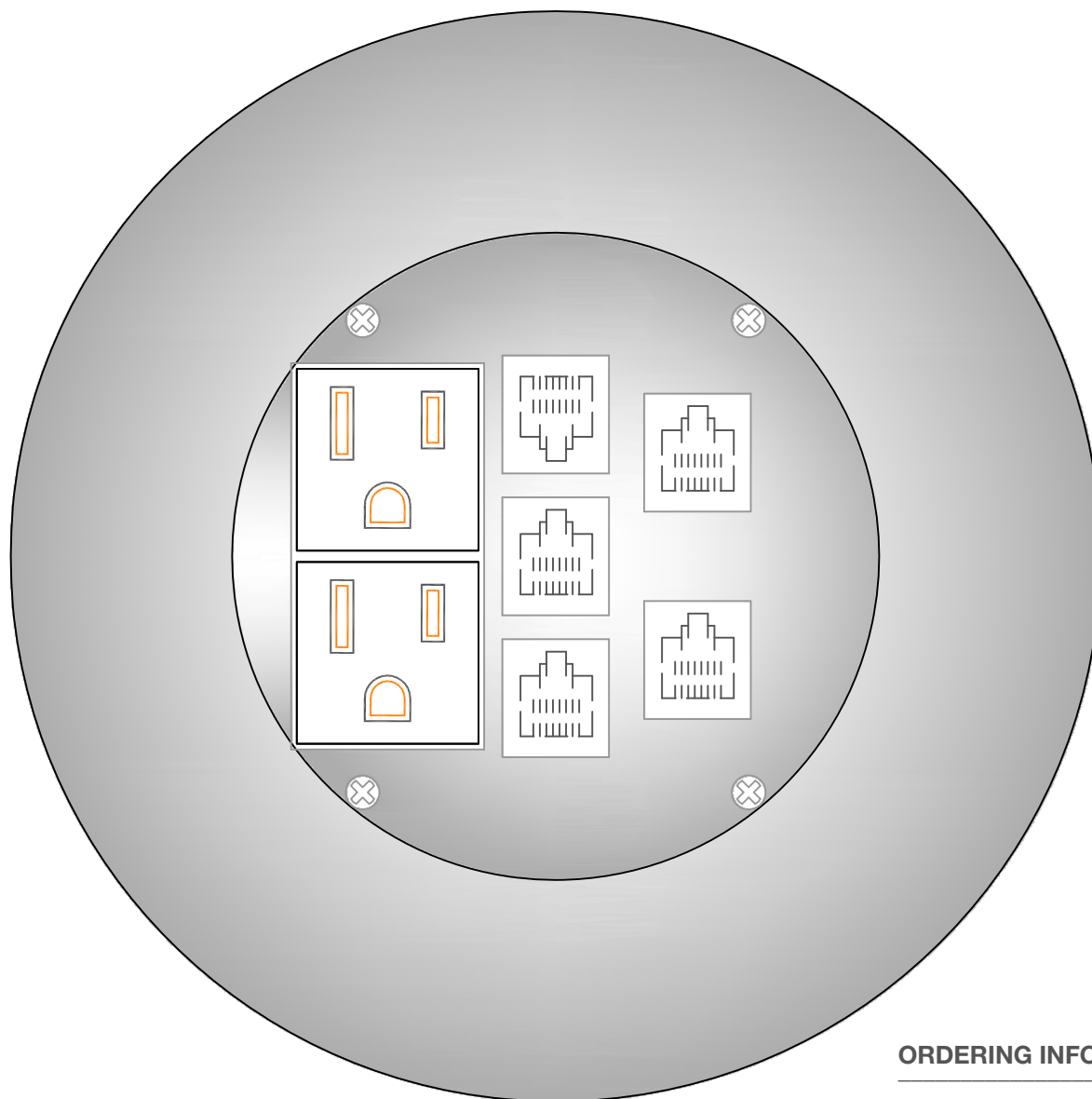


6"Dia



## MOI-PWR2-COMM5

2 single receptacle and 5 openings for COMM jacks  
 (openings suitable for all manufacturers Keystone style jacks)  
 COMM jacks not supplied or installed by Multiconnect.

### NOTE:

Single receptacles shall be 5-15R, 5-20RA available.  
 Keystone style jacks shall be CSA / UL Recognized or Listed

### ORDERING INFO

SLAB THICKNESS \_\_\_\_\_ inches

RECEPT. type 20A

FINISH type brass

stainless steel

blk powder coat   
 (drop cover only)

COVER type drop

threaded coin

threaded security

hinged

#### PROPRIETARY AND CONFIDENTIAL

THE INFORMATION CONTAINED IN THIS DRAWING IS THE SOLE PROPERTY OF MULTICONNECT. ANY REPRODUCTION IN PART OR AS A WHOLE WITHOUT THE WRITTEN PERMISSION OF MULTICONNECT IS PROHIBITED.

		DIMENSIONS ARE IN MM TOLERANCES: ANGLES: ± 1 DEGREE LINEAR: ± 0.1 MM (UNLESS SPECIFIED)
		MATERIAL See Variant table
NEXT ASST	USED ON	FINISH
APPLICATION		DO NOT SCALE DRAWING

	NAME	DATE (yy-mm-dd)
DRAWN	TJP	12-04-24
CHECKED		
ENG. APPR.		
MFG APPR.		
Q.A.		

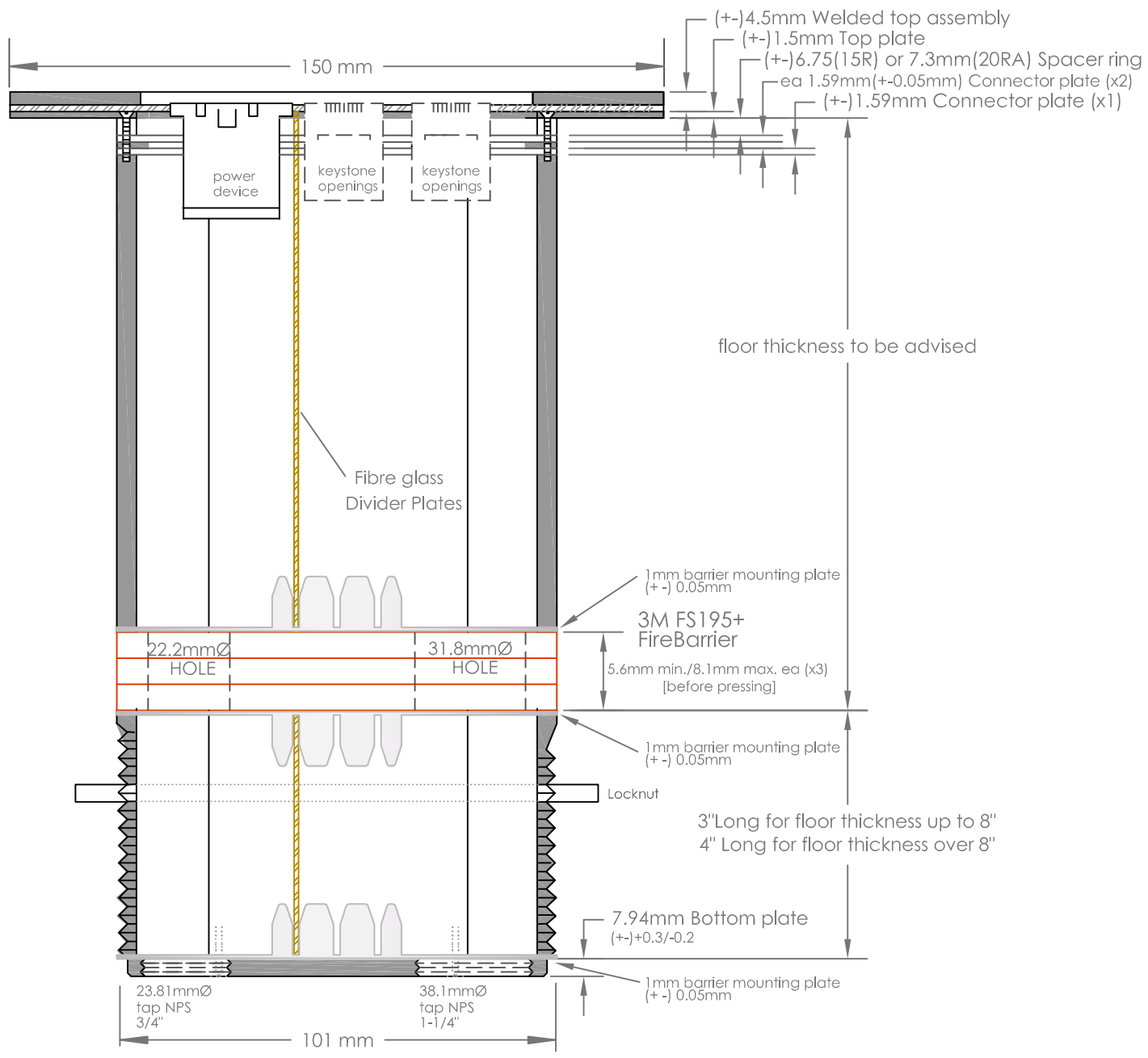
COMMENTS:

JOB TITLE:



630-665-2075 www.lewelectric.com

SIZE A	DWG. NO. MOI-PWR2-COMM5	REV.
SCALE=1:1	WEIGHT:	SHEET 1 OF 3



all tolerance (+ - ) = 0.3mm

**PROPRIETARY AND CONFIDENTIAL**  
 THE INFORMATION CONTAINED IN THIS DRAWING IS THE SOLE PROPERTY OF MULTICONNECT. ANY REPRODUCTION IN PART OR AS A WHOLE WITHOUT THE WRITTEN PERMISSION OF MULTICONNECT IS PROHIBITED.

		DIMENSIONS ARE IN MM TOLERANCES: ANGLES: ± 1 DEGREE LINEAR: ± 0.1 MM (UNLESS SPECIFIED)		NAME	DATE	JOB TITLE:
				TJP	12-04-24	
		MATERIAL		CHECKED		
		See Variet table		ENG. APPR.		
NEXT ASST	USED ON	FINISH		MFG APPR.		
APPLICATION		DO NOT SCALE DRAWING		Q.A.		
				COMMENTS:		630-665-2075      www.lewelectric.com
				SIZE	DWG. NO.	REV.
				A	MOI-PWR2-COMM5	
				SCALE=1:n, f.s.	WEIGHT:	SHEET 3 OF 3

