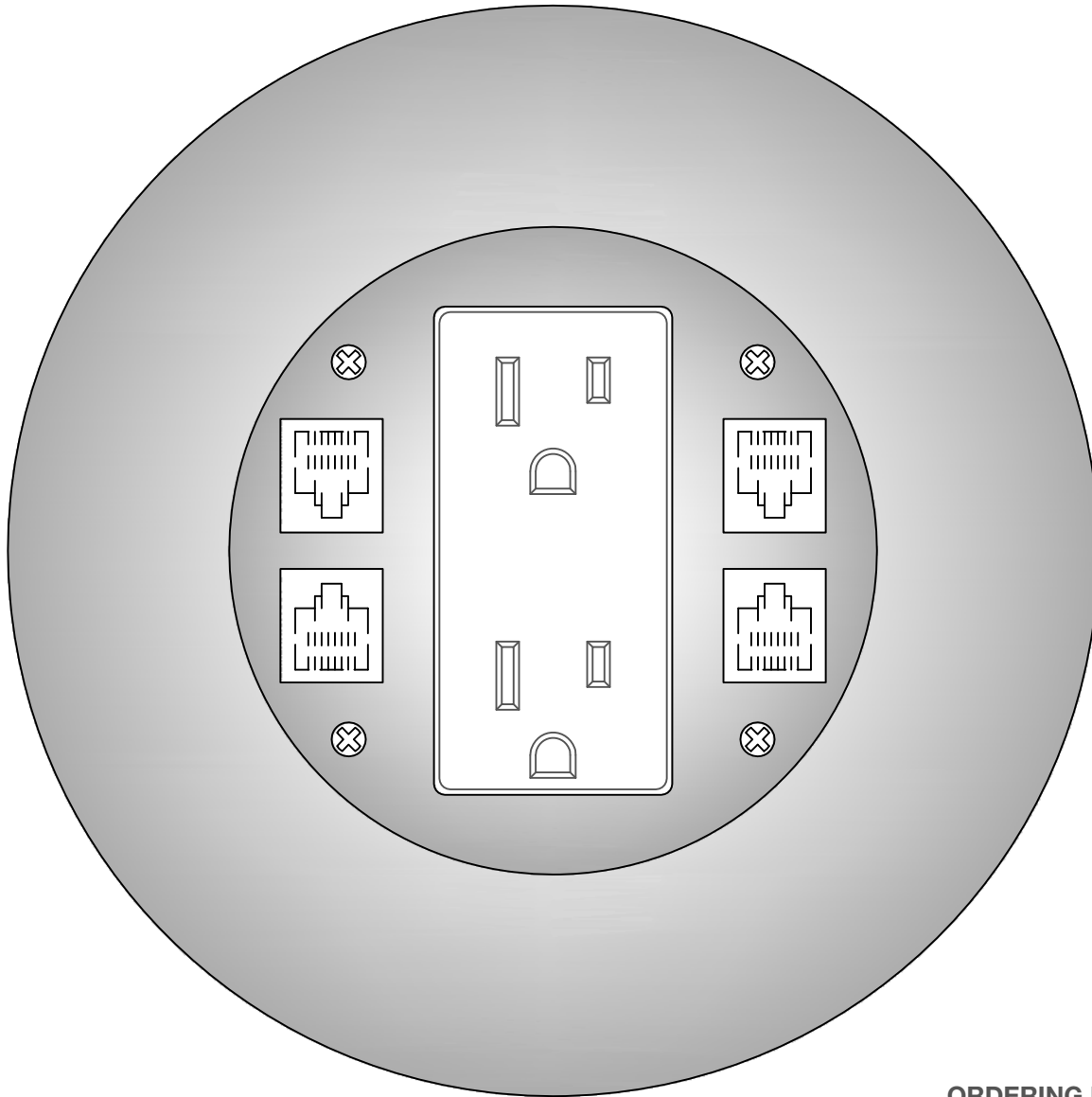


6"Dia



## MOI-DP1-COMM4

1 decora duplex receptacle and 4 openings for COMM jacks  
(openings suitable for all manufacturers Keystone style jacks)

### NOTE:

Duplex receptacle shall be 5-15R, 5-20RA available  
Keystone style jacks shall be CSA / UL Recognized or Listed

### ORDERING INFO

SLAB THICKNESS \_\_\_\_\_ inches

RECEPT. type 20A

FINISH type brass

stainless steel

blk powder coat   
(drop cover only)

COVER type drop

threaded coin

threaded security

hinged

		DIMENSIONS ARE IN MM TOLERANCES: ANGLES: ± 1 DEGREE LINEAR: ± 0.1 MM (UNLESS SPECIFIED)	NAME	DATE (yy-mm-dd)	JOB TITLE:
			DRAWN	TJP	12-04-24
			CHECKED		
			ENG. APPR.		
			MFG APPR.		
			Q.A.		
			COMMENTS:		



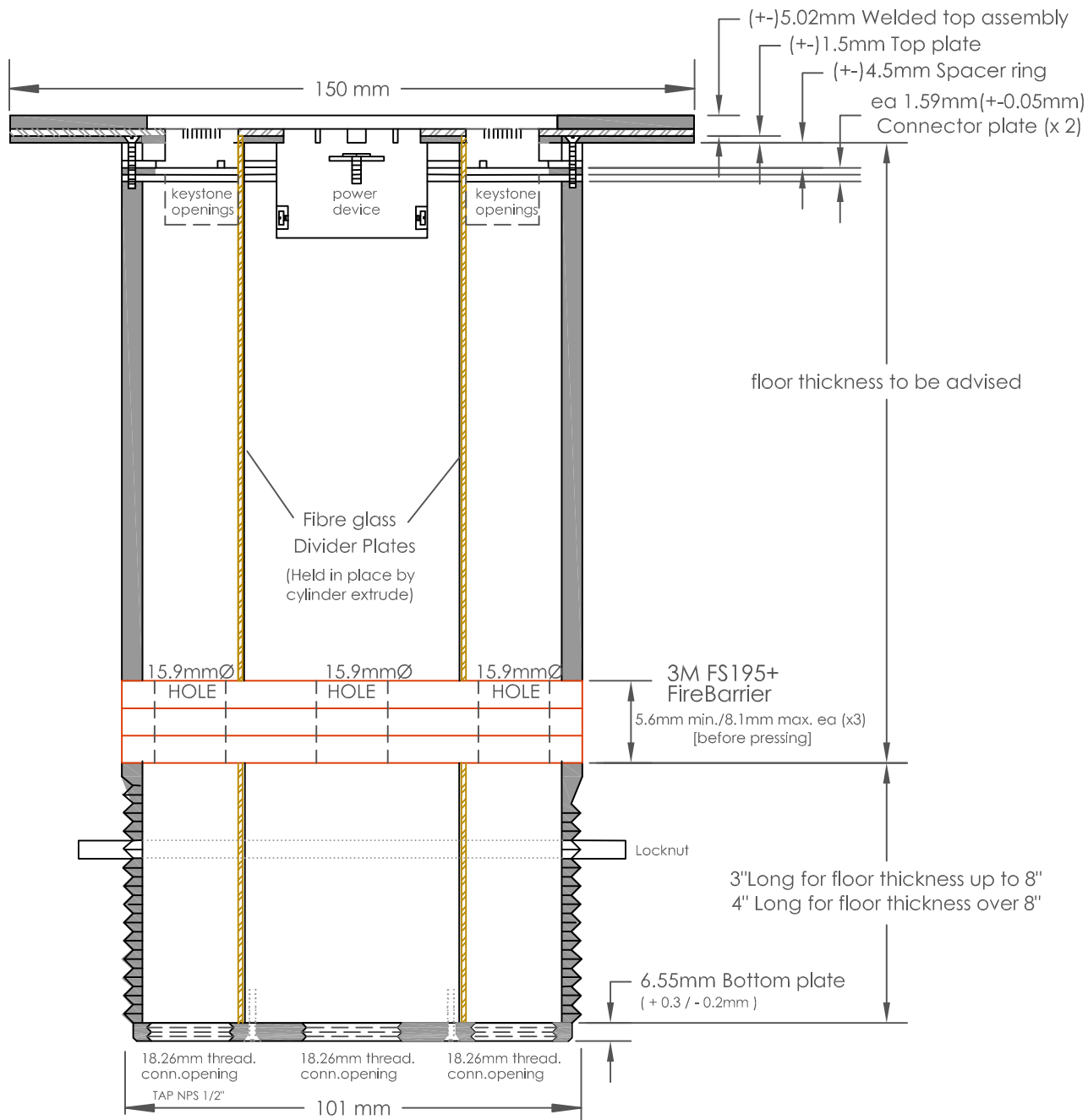
630-665-2075 www.lewelectric.com

SIZE DWG. NO. MOI-DP1-COMM4 REV. R7

SCALE=N.T.S. WEIGHT: SHEET 1 OF 3

**PROPRIETARY AND CONFIDENTIAL**  
THE INFORMATION CONTAINED IN THIS DRAWING IS THE SOLE PROPERTY OF MULTICONNECT. ANY REPRODUCTION IN PART OR AS A WHOLE WITHOUT THE WRITTEN PERMISSION OF MULTICONNECT IS PROHIBITED.

NEXT ASST	USED ON	FINISH
APPLICATION		DO NOT SCALE DRAWING



floor thickness to be advised

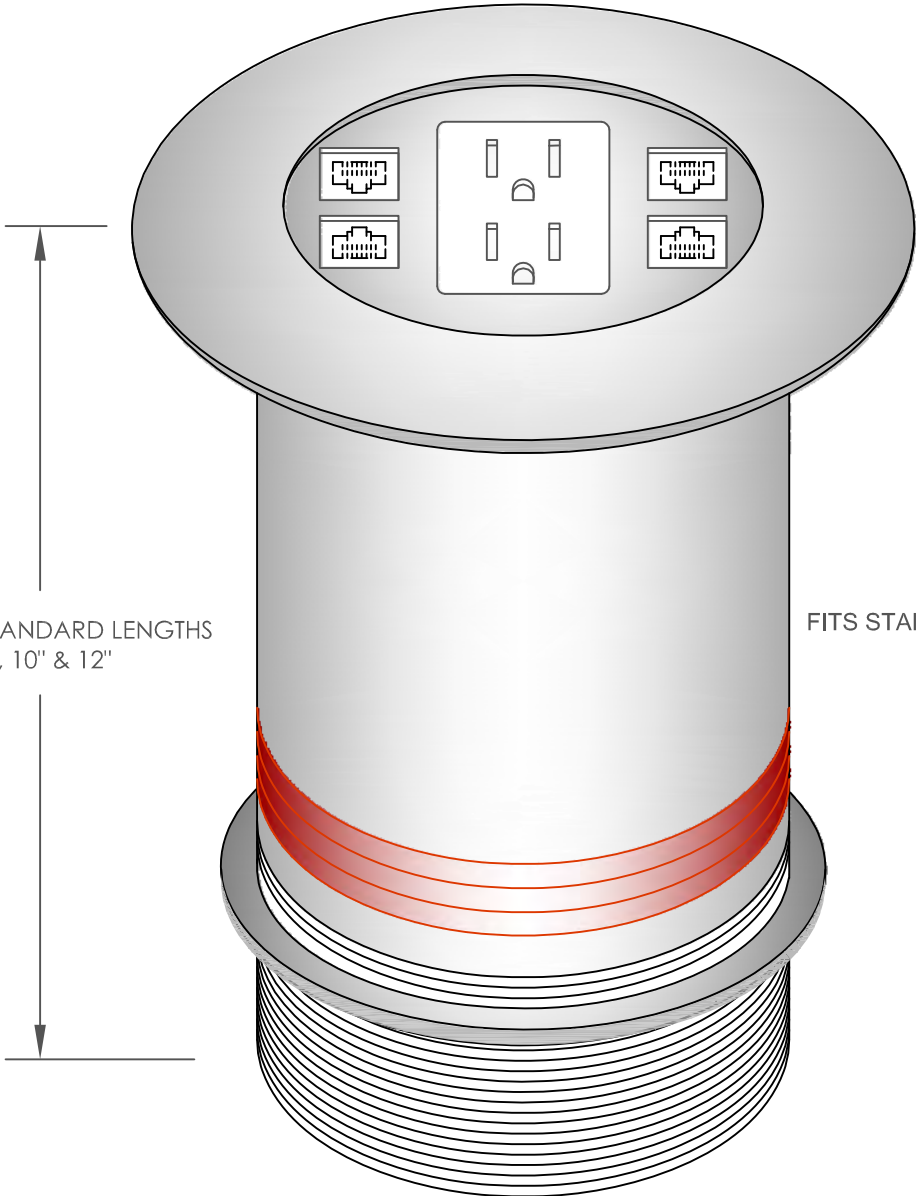
FITS STANDARD 4" CORED HOLE

all tolerance (+/-) = 0.3mm

**PROPRIETARY AND CONFIDENTIAL**  
 THE INFORMATION CONTAINED IN THIS DRAWING IS THE SOLE PROPERTY OF MULTICONNECT. ANY REPRODUCTION IN PART OR AS A WHOLE WITHOUT THE WRITTEN PERMISSION OF MULTICONNECT IS PROHIBITED.

		DIMENSIONS ARE IN MM TOLERANCES: ANGLES: ± 1 DEGREE LINEAR: ± 0.1 MM (UNLESS SPECIFIED)		NAME	DATE (yy-mm-dd)	JOB TITLE:
		MATERIAL See Variant table		DRAWN	TJP	12-04-24
		FINISH		CHECKED		
NEXT ASST	USED ON			ENG. APPR.		
APPLICATION		DO NOT SCALE DRAWING		MFG APPR.		
				Q.A.		
				COMMENTS:		
						<b>MULTICONNECT™</b>
						630-665-2075    www.lewelectric.com
				SIZE	DWG. NO.	REV.
				A	MOI-DP1-COMM4	R6
				SCALE=N.T.S.		WRIGHT:
						SHEET 3 OF 3

COVER PER SUBMITTAL




-COMM jacks shall be CSA / UL Recognized or Listed, Keystone style to mount in comm. openings.

STANDARD LENGTHS  
8", 10" & 12"

FITS STANDARD 4" CORED HOLE

**PROPRIETARY AND CONFIDENTIAL**  
THE INFORMATION CONTAINED IN THIS DRAWING IS THE SOLE PROPERTY OF MULTICONNECT. ANY REPRODUCTION IN PART OR AS A WHOLE WITHOUT THE WRITTEN PERMISSION OF MULTICONNECT IS PROHIBITED.

		DIMENSIONS ARE IN MM TOLERANCES: ANGLES: ± 1 DEGREE LINEAR: ± 0.1 MM (UNLESS SPECIFIED)	NAME	DATE (y-mm-dd)	JOB TITLE:	
			DRAWN	TJP		12-04-24
			CHECKED			
			ENG. APPR.			
		MATERIAL	MFG APPR.			
		See Variant table		Q.A.		
NEXT ASST	USED ON	FINISH		COMMENTS:		
APPLICATION		DO NOT SCALE DRAWING				
				630-665-2075	www.lewelectric.com	
SIZE	DWG. NO.			REV.		
A	MOI-DP1-COMM4			R7		
SCALE=N.T.S.		WEIGHT:		SHEET 2 OF 3		