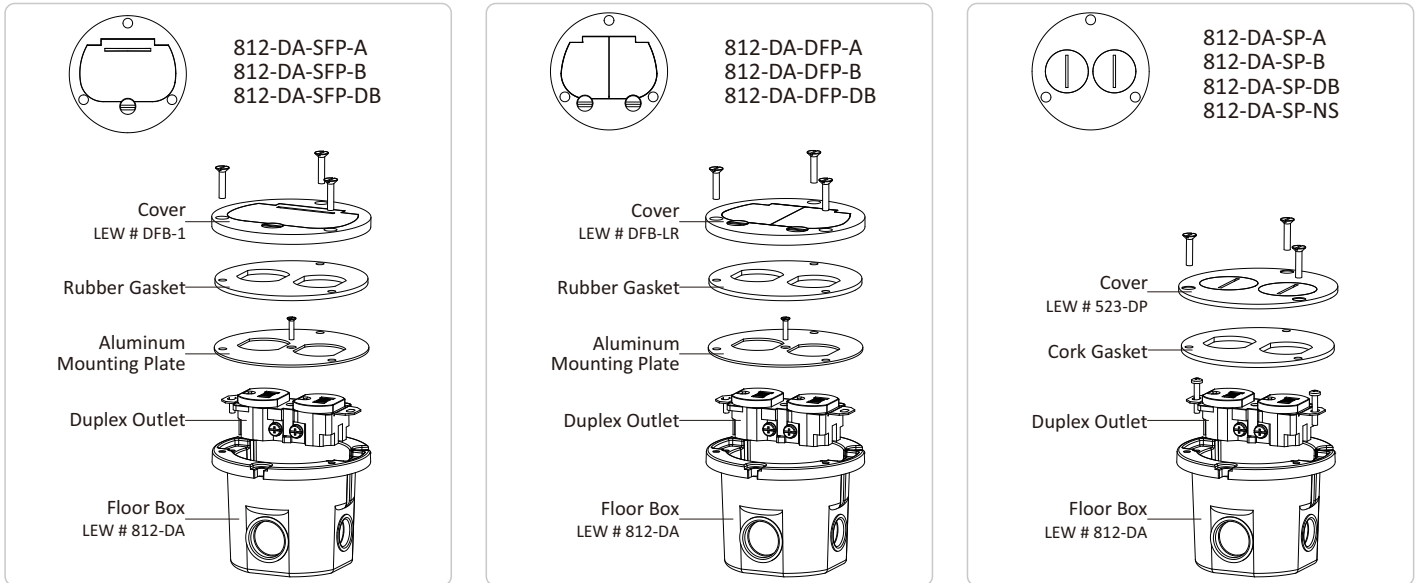


Product Diagram



Safety Guide

PRIOR TO INSTALLATION:

- *****LEW ELECTRIC FITTINGS ACCEPTS NO RESPONSIBILITY IF BELOW CONDITIONS ARE NOT MET/FOLLOWED*****
- Contact a local electrical inspector to make sure that this product meets or exceeds all local electrical codes, as electric codes may vary by location.
- **Risk of Electric Shock or Death.** Ensure to disconnect and turn off all power sources.

Installation Steps

For raised access floors:

1. Confirm that the floor thickness exceeds the minimum required installation thickness to ensure proper product installation (Fig. 1).

Model	Min Required Floor Thickness
812-DA-SFP-A 812-DA-SFP-B 812-DA-SFP-DB	0.94"
812-DA-DFP-A 812-DA-DFP-B 812-DA-DFP-DB	0.94"
812-DA-SP-A 812-DA-SP-B 812-DA-SP-DB 812-DA-SP-NS	0.75"

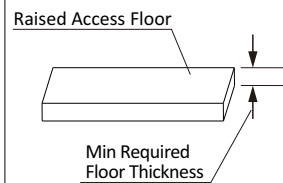


Fig. 1

2. Using a 4" hole saw, make a cut in the flooring to a depth equal to the thickness of the cast flange and cover assembly being used on the floor box (Fig. 2).

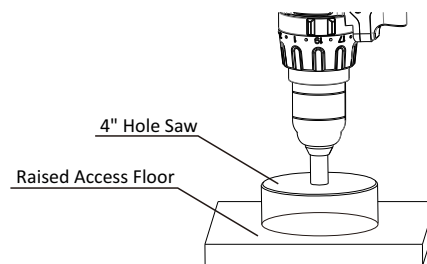


Fig. 2

3. Center a 3 1/2" hole saw in the 4 inch opening and cut through all the remaining layers of flooring (Fig. 3). Remove any extra material to create a clean lip for the #812-DA box to rest on (Fig. 4).

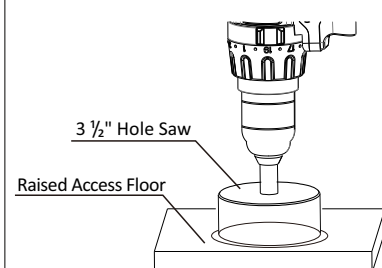


Fig. 3

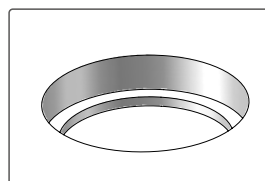


Fig. 4

4. Using standard electrical procedures, install a conduit fitting in the side or bottom of the 812-DA box. Run wires through the fitting and into the box and secure it. Drop the box into the hole. The bottom of the box lip should rest against the lip created in the floor. Using #8 wood screws (not provided), secure the box to the wood (Fig. 5).

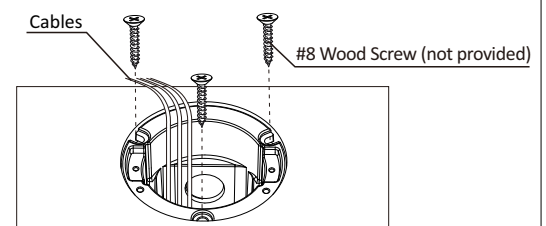


Fig. 5

For the following steps, please follow the corresponding instructions according to the specific product model.

812-DA-SFP series



812-DA-SFP-A
812-DA-SFP-B
812-DA-SFP-DB

812-DA-DFP series



812-DA-DFP-A
812-DA-DFP-B
812-DA-DFP-DB

5. Using standard electrical wiring practices, connect wires to the duplex receptacle. Attach the aluminum mounting plate to the receptacle using a #6/32 x 1/2" screw (provided) (Fig. 6). Place the plate with the attached receptacle on top of the #812-DA box inside the hole (Fig. 7).

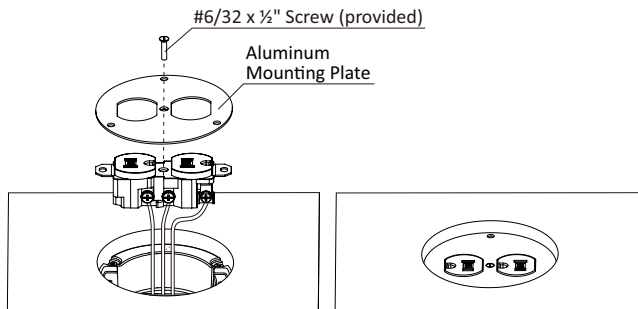


Fig. 6

Fig. 7

6. Place the rubber gasket on bottom box, then place the top cover ensuring their three holes are aligned. Secure them tightly to the bottom box using three #8-32 x 3/4" screws (provided). (Fig. 8 or Fig. 9).

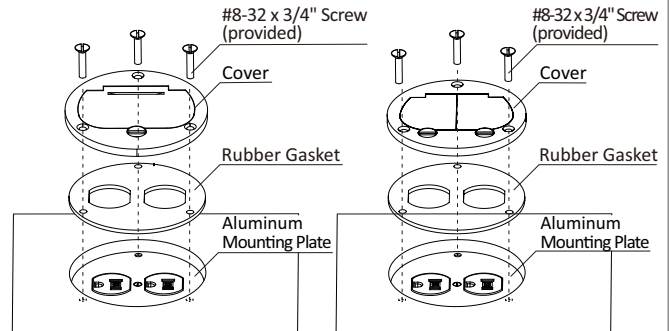


Fig. 8 812-DA-SFP Series

Fig. 9 812-DA-DFP Series

812-DA-SP series:



812-DA-SP-A
812-DA-SP-B
812-DA-SP-DB
812-DA-SP-NS

5. Using standard electrical wiring practices, connect wires to the duplex receptacle. Attach the receptacle to the inside well of the #812-DA box using two #6/32 x 1/2" screws (provided) (Fig. 10 & 11).

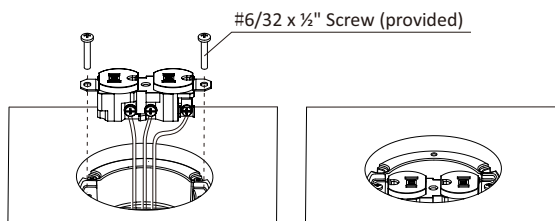


Fig. 10

Fig. 11

6. Place the cork gasket on bottom box, then place the top cover, ensuring their three holes are aligned. Secure them tightly to the bottom box using three #8-32 x 3/4" screws (provided) (Fig. 12).

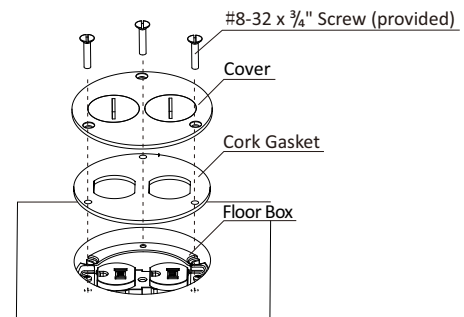


Fig. 12

Notes:

- For carpeted areas, use SCF-1 placing on top of floor box (cover assembly removed first), then inserting cover assembly into carpet flange. Use 1.25" longer screws provided through the cover assembly and that will affix to the floor box.

Please note that:

- For screw plug plates (812-DA-SP series), the cover and cork gasket fit inside the carpet flange.
 - For flip plates (812-DA-SFP series & 812-DA-DFP series), only the cover fits inside the carpet flange, while the rubber gasket and mounting plate remain in the floor box.
- For tile applications, order part #812 (box body only) and a TCP style cover. Follow steps 1-4 above. After wiring in step 5, install mounting plate and gasket, then place TCP style plate on top of floor and use #8/32 x 3/4" screws provided.

For concrete floors:

- Not recommended for new construction as no concrete cap is provided and this is a non-adjustable box.
- Core out 4 1/4" into concrete as deep as needed to accommodate height of box and ability to affix conduit from underneath.
- Backfill concrete if necessary to close gaps in floor.
- Follow steps 5-6 above.