
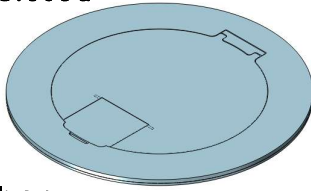


MOI6 - REC - P4 - AV - C2

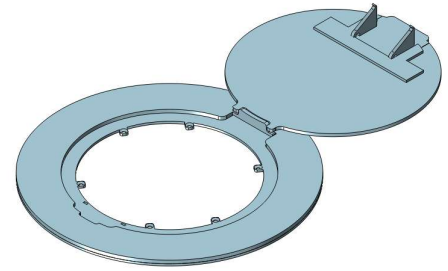
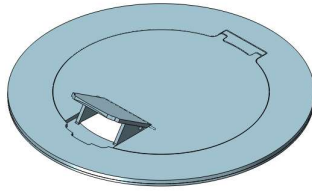
Ordering Information	Description: PT-P6-AV-C2
Slab Thickness:	 LEW ELECTRIC FITTINGS COMPANY
Single Rec: <input type="checkbox"/> 15A <input type="checkbox"/> 20A	
Duplex Rec: <input type="checkbox"/> 15A <input type="checkbox"/> 20A	
Cover Type:	
Proprietary and Confidential	877-537-2019 www.lewelectric.com
The information contained in this drawing is the sole property of NOCOM. Any reproduction in part or as a whole without the written permission of NOCOM is prohibited.	DWG. No. MOI6-REC-P4-AV-C2

Articulated Hinge Cover with Cable Exit Door (AHC-CED)

Cover Fully Closed



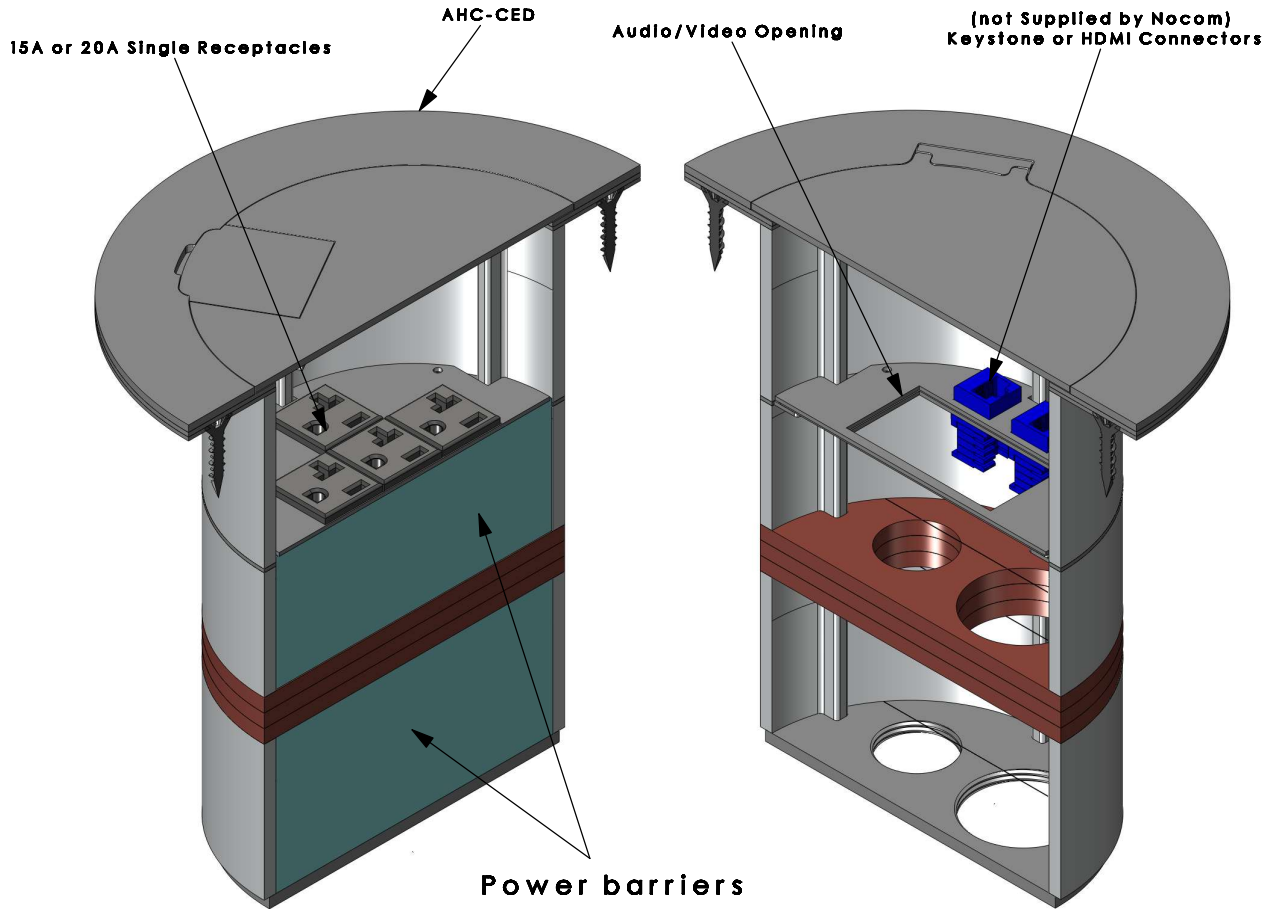
Cover CED Open




Cover Fully Open

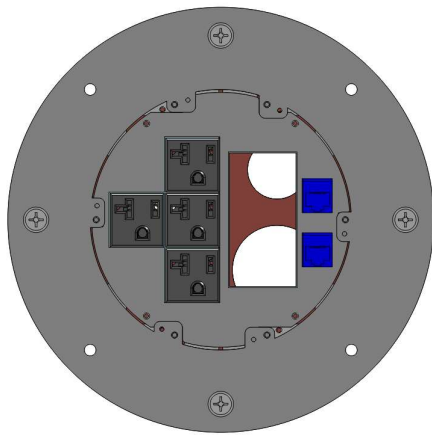
Cover Finishes

- Standard = Brushed Stainless Steel
- *Custom = Brushed Brass
or
Black Matte
- *Additional cost may apply
- *Other colours/finishes available upon request



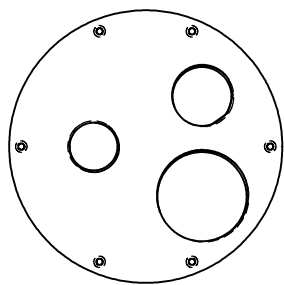
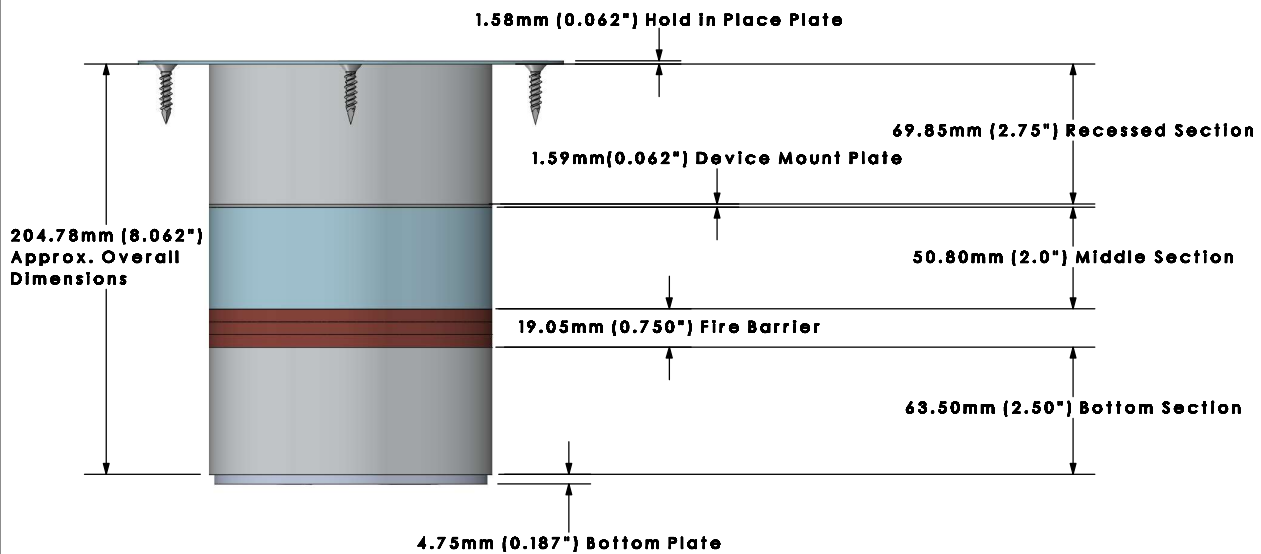
MOI6 - REC - P4 - DP - C2
(Isometric Cross Section Views)

Ordering Information	Description:
Slab Thickness:	 LEW ELECTRIC FITTINGS COMPANY 877-537-2019 www.lewelectric.com
Single Rec: <input type="checkbox"/> 15A <input type="checkbox"/> 20A	
Duplex Rec: <input type="checkbox"/> 15A <input type="checkbox"/> 20A	
Cover Type:	
Proprietary and Confidential	
The information contained in this drawing is the sole property of NOCOM. Any reproduction in part or as a whole without the written permission of NOCOM is prohibited.	
DWG. No. MOI6-REC-P4-AV-C2	




Configuration View

Power: x4
 A/V or DP: x1
 Comm: x2



Removable Bottom Plate

- NPT 0.75"
- NPT 1.0"
- NPT 1.50"

Ordering Information	Description:
Slab Thickness:	 LEW ELECTRIC FITTINGS COMPANY
Single Rec: <input type="checkbox"/> 15A <input type="checkbox"/> 20A	
Duplex Rec: <input type="checkbox"/> 15A <input type="checkbox"/> 20A	
Cover Type:	
Proprietary and Confidential	
The information contained in this drawing is the sole property of NOCOM. Any reproduction in part or as a whole without the written permission of NOCOM is prohibited.	
877-537-2019 www.lewelectric.com	
DWG. No. MOI6-REC-P4-AV-C2	