
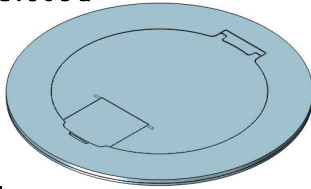


MOI4 - RES - REC - DP - C4

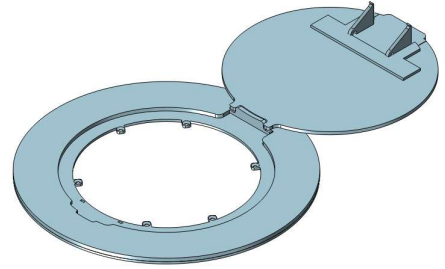
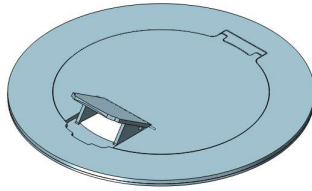
Ordering Information	Description:
Slab Thickness:	 LEW ELECTRIC FITTINGS COMPANY
Single Rec: <input type="checkbox"/> 15A <input type="checkbox"/> 20A	
Duplex Rec: <input type="checkbox"/> 15A <input type="checkbox"/> 20A	
Cover Type:	
Proprietary and Confidential The information contained in this drawing is the sole property of NOCOM. Any reproduction in part or as a whole without the written permission of NOCOM is prohibited.	877-537-2019 www.lewelectric.com
	DWG. No. MOI4-RES-REC-DP-C4

Articulated Hinge Cover with Cable Exit Door (AHC-CED)

Cover Fully Closed



Cover CED Open



Cover Fully Open

Cover Finishes

Standard = Brushed Stainless Steel

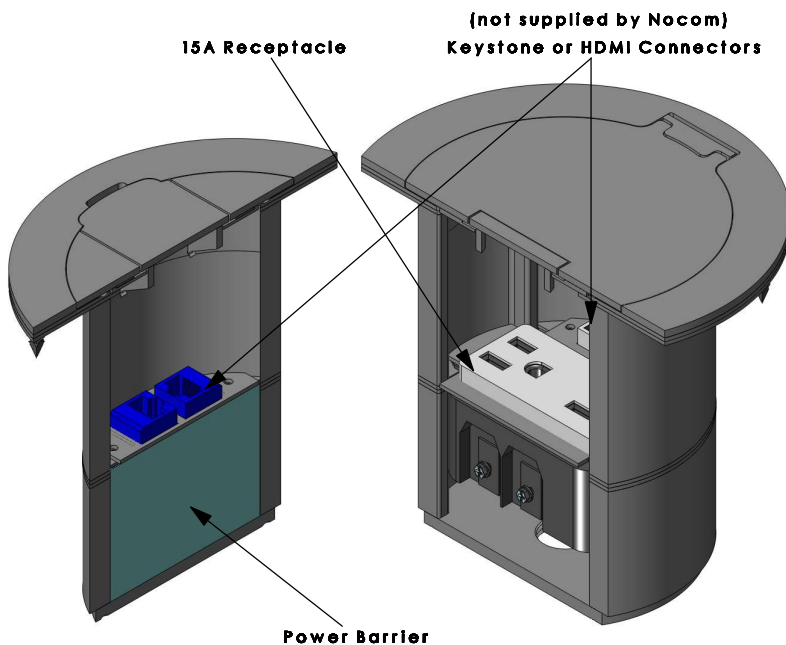
*Custom = Brushed Brass

or

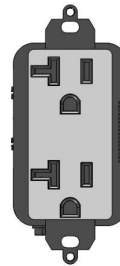
Black Matte

*Additional cost may apply

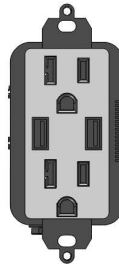
*Other colours/finishes available upon request



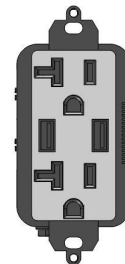
Receptacle Options



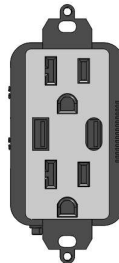
20A Receptacle



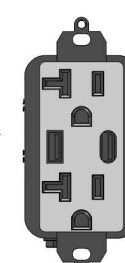
* 15A USB Receptacle



* 20A USB Receptacle




* 15A USB Type A/Type C Receptacle

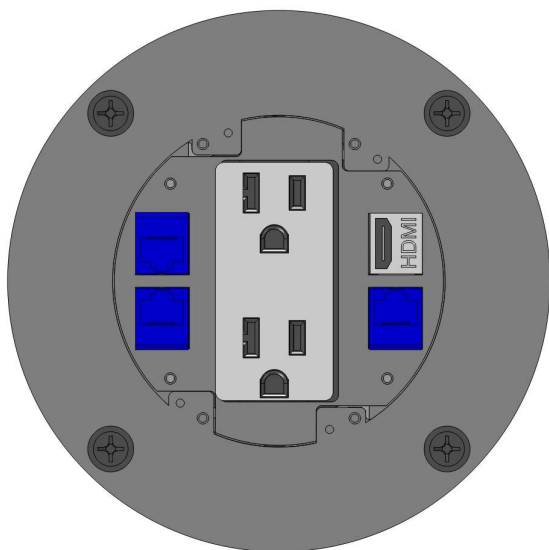


* 20A USB Type A/Type C Receptacle

* Additional costs will apply.

MOI4-RES-REC-DP-C4

Ordering Information	Description:
Slab Thickness:	 LEW ELECTRIC FITTINGS COMPANY
Single Rec: <input type="checkbox"/> 15A <input type="checkbox"/> 20A	
Duplex Rec: <input type="checkbox"/> 15A <input type="checkbox"/> 20A	
Cover Type:	
Proprietary and Confidential	877-537-2019 www.lewelectric.com
The information contained in this drawing is the sole property of NOCOM. Any reproduction in part or as a whole without the written permission of NOCOM is prohibited.	DWG. No. MOI4-RES-REC-DP-C4



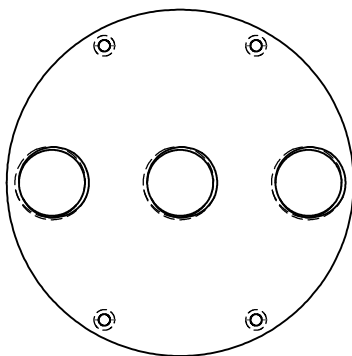
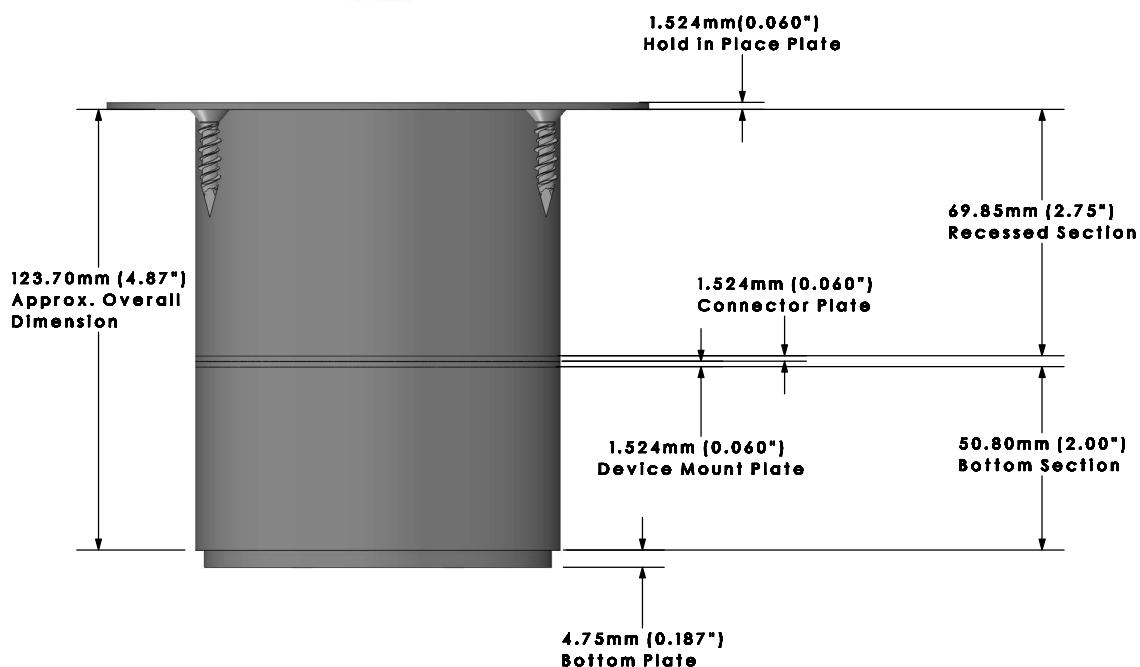
Configuration View

Power:

AV:


DP: x1

Comm: x4



Removable Bottom Plate

- NPS 0.500" x3

Ordering Information	Description:
Slab Thickness:	 LEW ELECTRIC FITTINGS COMPANY
Single Rec: <input type="checkbox"/> 15A <input type="checkbox"/> 20A	
Duplex Rec: <input type="checkbox"/> 15A <input type="checkbox"/> 20A	
Cover Type:	
Proprietary and Confidential	877-537-2019 www.lewelectric.com
The information contained in this drawing is the sole property of NOCOM. Any reproduction in part or as a whole without the written permission of NOCOM is prohibited.	DWG. No. MOI4-RES-REC-DP-C4