
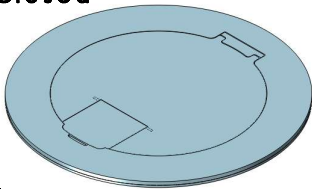


MOI4 - RES - REC - C10

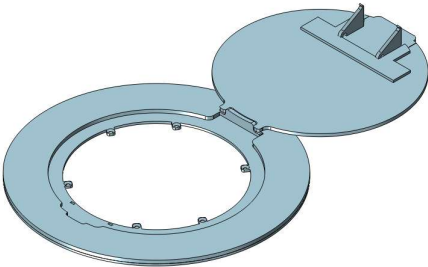
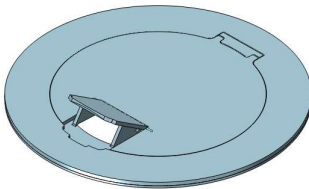
Ordering Information	Description:
Slab Thickness:	 <b>LEW ELECTRIC</b> <b>FITTINGS COMPANY</b>
Single Rec: <input type="checkbox"/> 15A <input type="checkbox"/> 20A	
Duplex Rec: <input type="checkbox"/> 15A <input type="checkbox"/> 20A	
Cover Type:	
<b>Proprietary and Confidential</b> The information contained in this drawing is the sole property of NOCOM. Any reproduction in part or as a whole without the written permission of NOCOM is prohibited.	<b>877-537-2019</b> <a href="http://www.lewelectric.com">www.lewelectric.com</a>
	DWG. No. <b>MOI4-RES-REC-C10</b>

# Articulated Hinge Cover with Cable Exit Door (AHC-CED)

Cover Fully Closed



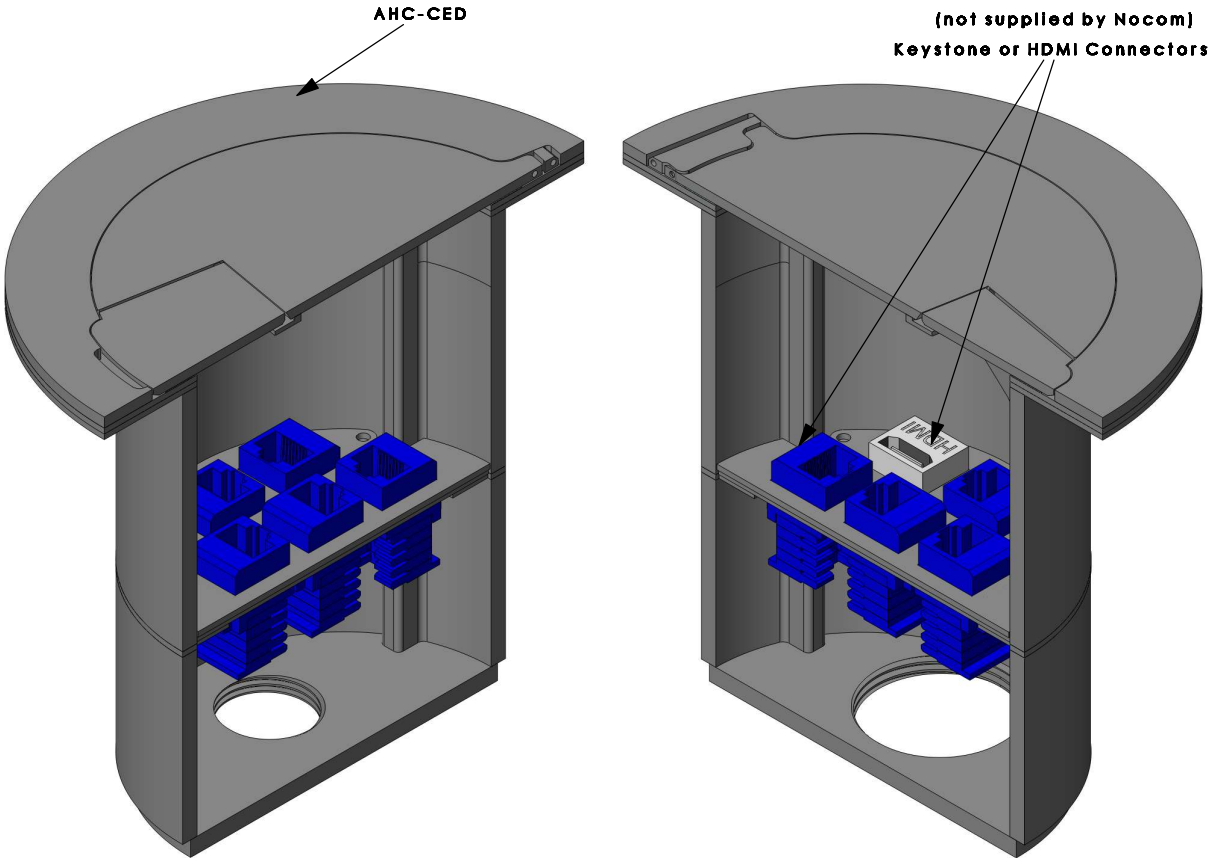
Cover CED Open




Cover Fully Open

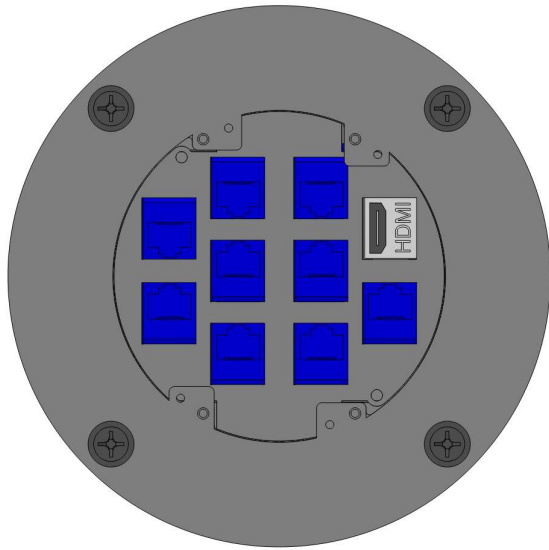
## Cover Finishes

- Standard = Brushed Stainless Steel
- \*Custom = Brushed Brass  
or  
Black Matte
- \*Additional cost may apply
- \*Other colours/finishes available upon request



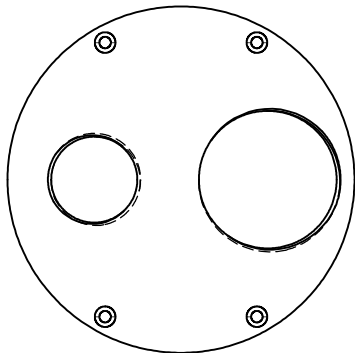
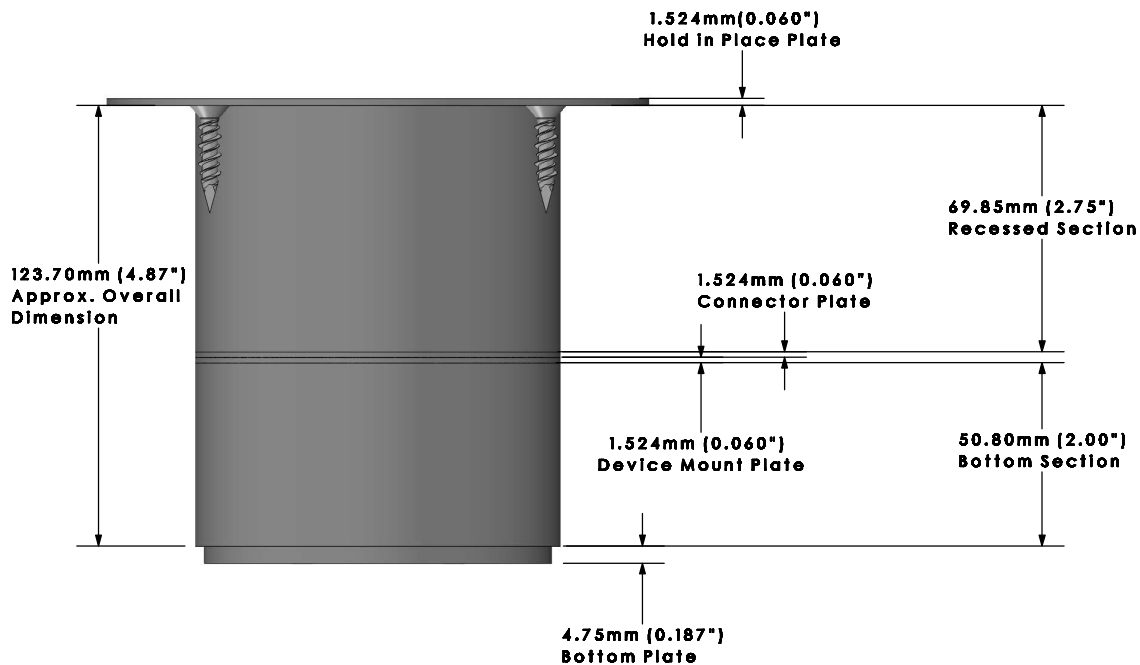
MOI4 - RES - REC - C10

Ordering Information	Description:
Slab Thickness:	 <b>LEW ELECTRIC</b> FITTINGS COMPANY
Single Rec: <input type="checkbox"/> 15A <input type="checkbox"/> 20A	
Duplex Rec: <input type="checkbox"/> 15A <input type="checkbox"/> 20A	
Cover Type:	
Proprietary and Confidential	877-537-2019 <a href="http://www.lewelectric.com">www.lewelectric.com</a>
The information contained in this drawing is the sole property of NOCOM. Any reproduction in part or as a whole without the written permission of NOCOM is prohibited.	DWG. No. MOI4-RES-REC-C10




## Configuration View

Power:  
AV:  
DP:  
Comm: x10



## Removable Bottom Plate

- NPS 0.750"
- NPS 1.250"

Ordering Information	Description:
Slab Thickness:	 <b>LEW ELECTRIC FITTINGS COMPANY</b>
Single Rec: <input type="checkbox"/> 15A <input type="checkbox"/> 20A	
Duplex Rec: <input type="checkbox"/> 15A <input type="checkbox"/> 20A	
Cover Type:	
Proprietary and Confidential	877-537-2019 www.lewelectric.com
The information contained in this drawing is the sole property of NOCOM. Any reproduction in part or as a whole without the written permission of NOCOM is prohibited.	DWG. No. <b>MOI4-RES-REC-C10</b>