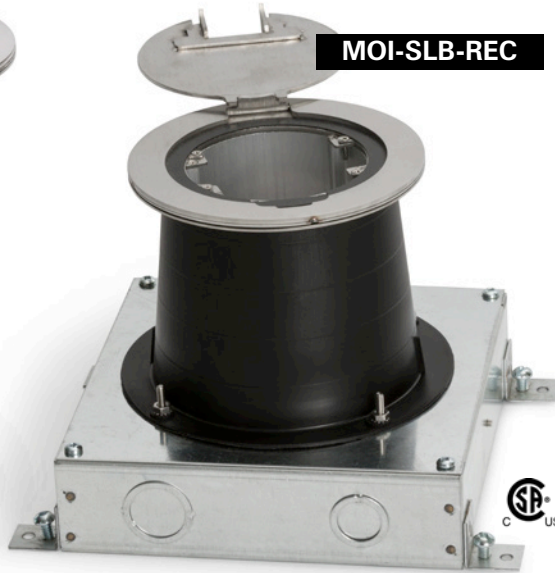


## HOW TO ORDER

**STEP 1 » Choose Recessed Poke Through (MOI-REC) or Recessed In Slab (MOI-SLB-REC)**



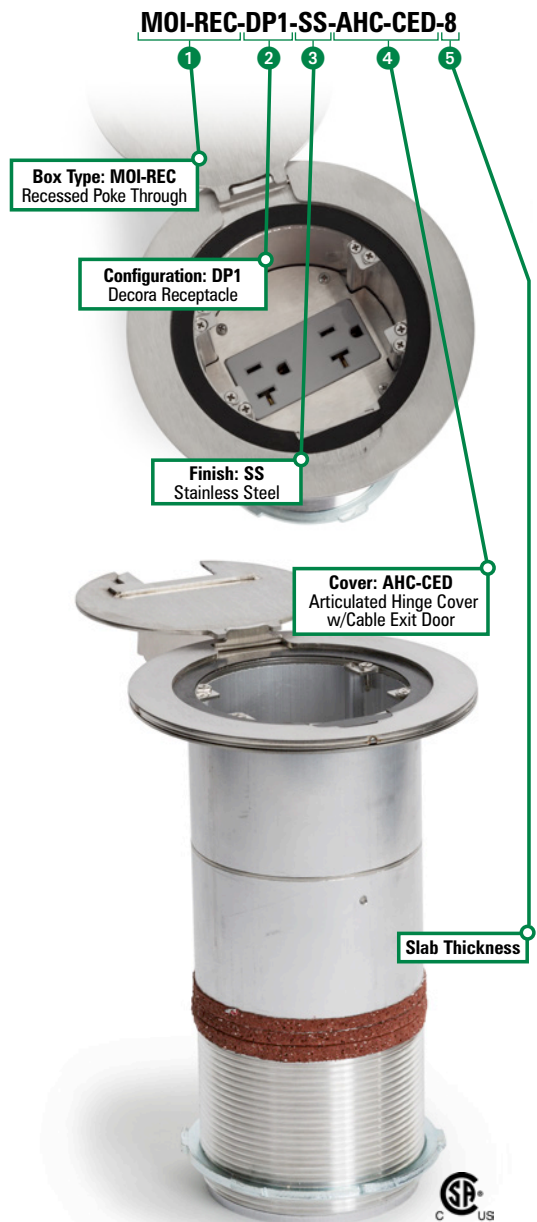
**STEP 3 » Choose Cover Finish**  
 (AHC-CED Cover only for MOI-REC and MOI-SLB-REC)



**STEP 4 » Specify Slab Thickness**

» Must specify when ordering to achieve proper collar size of threaded pipe  
 \*\* Minimum slab thickness for Recessed (MOI-REC or MOI-SLB-REC) is 6 inches

**EXAMPLE**



**STEP 2 » Choose Configuration \***

*\*Configuration does not include communication components*

	<b>COMM10 »</b> Ten communication openings
	<b>DP1 »</b> Decora receptacle
	<b>DP1-COMM4 »</b> Decora receptacle & (4) communication openings
	<b>PASS-THROUGH »</b> 2.5" trade size circular opening
	<b>PWR2-COMM4 »</b> (2) single receptacle & (4) communication openings
	<b>PWR2-COMM4-DB15 »</b> (2) single receptacle & (4) communication openings & (1) DB-15 opening

	<b>PWR2-COMM5 »</b> (2) single receptacle & (5) communication openings
	<b>PWR2-COMM6 »</b> (2) single receptacle & (6) communication openings
	<b>PWR4 »</b> (4) single receptacle
	<b>PWR4-COMM4 »</b> (4) single receptacle & (4) communication openings
	<b>SYS-COMM »</b> Systems furniture communication-power & comm cabling
	<b>AV-COMM4 »</b> (1) Decora opening for CI-5BWPA & (4) communication openings

**EXAMPLE:**

For Recessed Poke Through » **MOI-REC-COMM10**  
 For Recessed In Slab » **MOI-SLB-REC-COMM10**